

CREATION

Vol. 19 No. 9 February 2018



Journal of the CREATION SCIENCE MOVEMENT

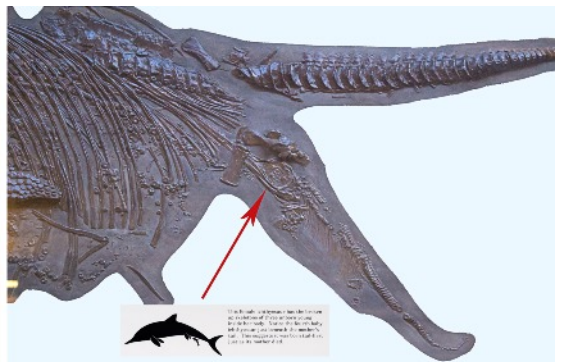
BBC Sea Monster

A programme aired on BBC 1 on 7th January documented the amazing discovery of a new species of ichthyosaur, a very rare event. Narrated by Sir David Attenborough, the story of this 'Jurassic sea monster' followed through from the initial find of an unusual fossil flipper to the recovery of much more of the fossil skeleton from shale and limestone rock.

The fieldwork involved carefully digging away tons of soil in order to expose underlying strata in an unstable cliff near Lyme Regis, on the south

coast of England. The fossil was removed in a number of sections, each of them so heavy that it was necessary to use a long pontoon raft to bring them to a point where they could be transported to facilities for further preparatory work and study.

After months of careful chiselling away of the very hard rock matrix, the skeleton was fully revealed as about 4.5 metres long. Some sophisticated science then uncovered further fascinating information about the fossil. The head of the fossil was not found; possibly it had been bitten off whilst it was alive, as evidence was discovered



Ichthyosaur fossils in the Natural History Museum, London. *Left*, frontal view of mounted fossil; *right*, lateral view of youngster in the process of being born tail first. Red arrow indicates head with large eye. Images: CSM.

of damage to the flippers and some of the ribs, probably by a massive bite.

The investigation then switched to pinpointing what animal could have inflicted such a wound. Judging by the gape, a likely candidate was *Temnodontosaurus*. This ichthyosaur was much larger, up to around 12 metres long, and had a very powerful bite. Its jaw has been estimated to have a bite-strength of about 30,000 newtons, i.e., about twice the strength of the largest present-day crocodile. It was already known from stomach remains in other fossils that ichthyosaurs were cannibalistic.

Another interesting discovery was that the fossil recovered from the cliff had fossilised remains of skin present. Examination of samples under an electron microscope revealed that the creature was probably counter-shaded – dark above and pale underneath – much the same as the colour pattern of present-day sharks. Such counter-shading is thought to have helped make these creatures less visible from below and to have given greater protection from UV light from above.

Unfortunately this otherwise fine programme was marred by a dogmatic adherence to evolutionary presuppositions. For example, the question was studiously avoided as to how creatures as large as 12m long could be fossilised whole or almost whole. Surely if such an animal died and sank to the sea bottom it would be eaten by scavengers and its bones

would be scattered around. And if sedimentation occurred slowly, supposedly over millions of years, then its remains would have decayed and disintegrated long before they were fully covered in sediment. No, the occurrence of such fossils indicates they must have been buried by sediment quickly. Hence the sedimentary layers do not represent millions of years, but rather a much shorter time period.

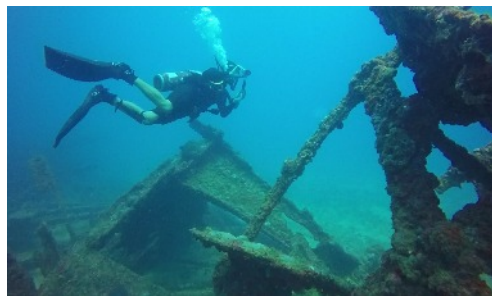
Indeed, fossils are known of at least two ichthyosaurs that were in the process of giving birth when they were fossilised (see image on page 1). Giving birth most definitely does not take millions of years! So if the ichthyosaurs were buried whilst this was taking place, then the burial must have occurred catastrophically quickly. What kind of catastrophe could bury such a large creature so fast? The obvious candidate is Noah's Flood, but of this the programme was completely silent.

Because of these facts, the notion that the so-called Jurassic Coast is about 200 million years old is laughable. This supposed age is based on evolutionary assumptions that are unverifiable – nobody was around to observe when the layers were first formed – and fly in the face of the evidence of the fossils mentioned above. They also depend upon assumptions of uniformitarianism which are likewise unproven and are at odds with such obvious evidence of past catastrophe.

Furthermore, the existence of fossilised remains of skin makes the age of the specimen questionable. Could something as fragile and liable to rotting as skin really remain for a long period after death? Yet fossilized skin is now known from a wide range of prehistoric creatures. All of this suggests that fossils are much, much younger than evolutionists would have us believe – or rather, Evolution is make-believe.

Shipwrecks

An article on the BBC News website (goo.gl/U15jyB) for 06 October reported on a scientific project by the University of Nottingham to produce a highly detailed 3D map of a shipwreck. The wreck is of the SS Thistlegorm, which was sunk by a bomber in 1941 and lies on the bed of the Red Sea off the coast of Egypt. The map has been produced because the wreck has become one of the most famous dive sites in the world, due to the clear water and the military equipment still on board.



A diver exploring a shipwreck - clearly a designed structure even though obscured by marine organisms. Image courtesy of romerorc, Pixabay.

The article quotes Dr Henderson from the university's School of Archaeology: “The thing about underwater sites and the importance of underwater cultural heritage is that the only people who've ever seen it are divers. However, we are now at a point where we have the technology to reconstruct these sites.” This raises some interesting points to ponder:

Firstly, it is evident that even though a wreck may have been colonised by many underwater organisms (as in the accompanying figure) we can nevertheless recognise that it isn't just a part of the seabed. We have the ability to recognise design. We can perceive when an object has features that indicate it must have had a designer.

Secondly, there have of course been many shipwrecks in diverse places over the centuries. If we compare one with another, we may recognise a number of features that they have in common. But this doesn't mean that one shipwreck was derived from another. Rather, it means that they share some of the same design principles.

So it is with living organisms. Anyone with an open mind can see that the many amazing features of these organisms speak of design. And the fact that these creatures have some features in common doesn't mean that one evolved from the other. What it shows is the re-use of good design principles by one amazing Designer.

As a scientific theory, Darwin's Theory of Evolution is just plain shipwrecked.

Pterosaur eggs

In November 2017 an article on the BBC News website (goo.gl/rfb6oy) reported on the discovery of a large number of fossilised eggs of a pterosaur called *Hamipterus tianshanensis*. More than 200 eggs of this flying reptile were found at an unspecified site in China. These were far too many eggs to have been laid by one individual, suggesting that the species nested in colonies.

Furthermore, an almost complete skeleton of a hatchling showed that bones related to flight were less developed than bones of the hind limb, indicating that newborns might have been able to walk but not to fly. This implies that some parental help was needed for the hatchlings, reinforcing the idea of communal nesting for mutual support and defence from predators.



A rich diversity of pterosaurs are known from the fossil record, such as this artist's depiction of a *Pteranodon* species. Image in the public domain.

The article went on to note that “large numbers of the flying reptiles died in a storm in the Early Cretaceous period”, supposedly about 120 million years ago. This is an oblique reference to the original discovery of *Hamipterus* in 2005 in north-western China. Dense concentrations were found of pterosaur bones, associated with soft tissues and eggs. The site was thought to represent a nesting colony that storm floods had covered with mud. Dozens of individuals were secured from a total that in 2014 was estimated to run into the many hundreds.

What kind of catastrophic event, one wonders, could have led to such a large number of deaths of adults and of the burial in sediment of large numbers of eggs and hatchlings? A devastating global flood, perhaps?

Noah's Ark loose

Talking of storms, an intriguing news item on Premier's website (goo.gl/yVKGf8) reported that a replica of Noah's Ark caused chaos at a port early in January after it broke free during Storm Eleanor. Gusts of wind exceeding 110 km/hour were recorded in parts of the Netherlands at this time.

The replica, scaled-down but still massive at about 70 metres long x 10 metres wide, struck yachts and other boats when it came free from its mooring at Urk.



A replica of Noah's Ark in the Netherlands. Image courtesy of Lemgo/D, Pixabay.

It is interesting to note that at no time was the ark reported to be in any danger of sinking. When the replica was originally constructed, its owner followed closely the proportions described in the Bible (Gen. 6: 14-16). Clearly God knows very well indeed how to design a vessel capable of riding out any storm-flood. Even a global one.

Google chess triumph

Google gained headlines recently for its 'AlphaZero' artificial intelligence programme. The algorithm triumphed at chess against world-leading specialist software within hours of teaching itself the game from scratch. According to an article on the BBC News website (goo.gl/J4ZLcV) it was able to outperform another leading programme, 'Stockfish', in just four hours after being given the rules of chess and told to learn by playing simulations against itself.

It's interesting to note that the programme was able to teach itself. It

was only able to do so because of parameters designed into it by an outside intelligent agency – human beings – along with the laws of chess that undergird how it can operate. In similar fashion, we can learn

the biblical parameters that help us to live successfully and recognise the scientific laws that undergird the material universe. This should tell us something about how we came into being: we have a Designer.

Darwin is bust

University College London is a well-known academic institution and a staunch supporter of the theory of Evolution. It's no great surprise therefore to find that Darwin is celebrated in a bust on display near one of its main entrances. But what is surprising – and amusing – is UCL's apparent failure to recognise the implications of its own words. The caption to the bust says:

"A plaster bust of Charles Darwin was relocated from this window when the Grant Museum of Zoology moved over the road.

Institute of Making members were challenged to create a new Darwin in any form or medium using data from a 3D laser scan of the original bust. This

full sized resin version was milled using the massive robot arm "La Toyah" at B>Made, the CAD/CAM lab at the Bartlett."

So UCL tacitly admits that the input of intelligent design was necessary to create a resin bust of Darwin. Yet a bust is far less complex than the living, breathing, original Darwin himself. How much more likely it is, then, that Darwin was also intelligently designed - and by Someone far wiser than a group of university academics.

Furthermore, it's interesting to note that the wording of the caption on the window is already beginning to wear away, making it harder to read. This demonstrates the Law of Entropy in action - that ongoing time leads to a *loss* of information, not a gain. Hence



A resin bust of Darwin at UCL, London. Image: CSM.

a time period of many millions of years does not support the gradual development of increasingly complex life-forms.

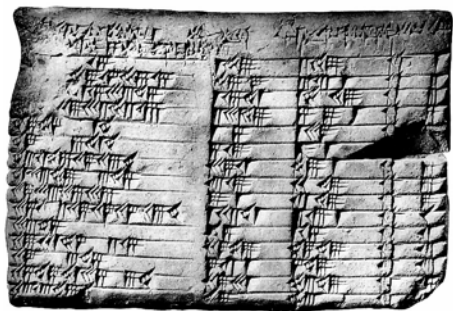
UCL is to be congratulated for inadvertently providing such a useful illustration of the logical necessity of intelligent design and the preposterous nature of Darwin's theory.

Babylonian maths

Evolutionists would have us believe that mankind evolved from apes and hence societies millennia ago were far more primitive than 'advanced' modern man. But is this viewpoint correct? No, not at all.

The very complexity of ancient languages should immediately give one pause for thought. And even more persuasive is a recent article (<http://dx.doi.org/10.1016/j.hm.2017.08.001>) in the journal *Historia Mathematica* that casts light on a hitherto mysterious Babylonian tablet.

Known to historians by the beguiling name of Plimpton 322, it seems this baked clay tablet is actually a trigonometry table. And not just any old table: it is powerful and exact ratio-based sexagesimal trigonometry. As such, the authors describe it as "one of the most sophisticated scientific artifacts of the ancient world". They go on to note that "The Old Babylonian scribes used a richer sexagesimal (base



The clay tablet 'Plimpton 322'. Image (from Wikipedia) in the public domain.

60) system which is more suitable for exact computation than our decimal system, and while they were not shy of approximation they had a preference for exact calculation... If this interpretation [of the tablet] is correct, then Plimpton 322 replaces Hipparchus' 'table of chords' as the world's *oldest trigonometric table* – but it is additionally unique because of its exact nature, which would make it the world's only *completely accurate trigonometric table*.”

All this from a society of simple farmers not long risen above the mental capacity of apes? Hardly!

Wasted eyes

Darwin admitted that the idea something as complex as the eye could have been formed by natural selection seemed ‘absurd in the highest possible degree’. He attempted to explain such complexity as the culmination of ‘a long series of small heritable variations’, but this is just a somewhat

desperate example of wishful thinking. One can only wonder what Just So stories he would have invented to account for the many remarkable discoveries about the eye's subtleties that have been made since then.

One recent discovery has been the astonishing finding that waste from cells in one part of the eye becomes food for cells in another part. An article in Science Mag online (goo.gl/19ZP82) reports on studies of the biochemical workings of the retina by a research team at the University of Washington in Seattle.

The team found that retinal pigment epithelium (RPE) cells obtain glucose from their blood supply but then, instead of using it, pass it on to the eye's rod and cone cells. The latter consume the glucose, convert leftovers into lactate, and then feed that back to the RPE. The RPE's mitochondria then burn the lactate to meet the RPE's own energy needs. If the RPE doesn't receive lactate then it can switch to consuming glucose instead, but in such circumstances the rod and cone cells would starve and die.

The article quotes an ophthalmologist at The Scripps Research Institute: “There is a growing consensus that no cell exists on its own in complex tissues like the retina”. It is clear that the RPE/rod+cone system works – and works well – only because their delicate interplay is so precisely

balanced. How, then, could it possibly have evolved gradually, over millions of years, without the rod and cone cells dying in the meantime? The system is such a clear example of design by an amazing Designer that only those who are wilfully blind refuse to see it.

Reason to Hope

It was fascinating to read in the news recently that *Reason to Hope*, the third Global Atheist Convention scheduled for Melbourne in February 2018, has been cancelled due to lack of interest (goo.gl/aSpras). Could this be because in the absence of God there is no reason to hope for anything?

As the writer of the article goes on to say, “when we don't have a story to tell the next generation about the meaning and purpose of human life – a ‘reason to hope’ – then we are only a hair's breadth away from barbarism”.

The good news is that ‘God so loved the world that He gave His only begotten Son, that whosoever believes in Him should not perish but have eternal life’ (John 3: 16).

Cuttings & Comments from **New Scientist**

by *Dr David Rosevear*

7 October p.8 – CRISPR from head to toe

CRISPR is a powerful technique developed 5 years ago for cutting out and inserting bits of DNA. Up to now it has involved removing a cell from the body, changing the DNA and reinserting the mended cell.

“Editing cells inside the body without removing them could be used to treat absolutely everything.”

“Results from animal studies targeting the liver, muscles and brain suggest CRISPR genome editing could revolutionise medicine, allowing us to treat or even cure a huge range of disorders.”

“The challenge is delivering the CRISPR machinery to tissues inside the body. This needs two components, a protein that cuts DNA and a piece of RNA that guides it to the precise DNA site to make the cut.”

The field is advancing very rapidly, so we may be on the verge of a major leap forward in treating disorders.

Note that all this involves precision and information.

Who says the DNA is mainly junk?

14 October p.7 – Fires may have given our evolution a kick-start

In the absence of repeatable, observable ape-to-man evolution, researchers must rely heavily on their imagination, much like the Just So stories of Kipling. Here is a good example.

“A nearby exploding star 8 million years ago may have triggered more frequent lightning on Earth. Wildfires ignited by that lightning could help explain the spread of east

African savannahs – which many researchers think provided a vital backdrop for the early evolution of hominins.”

However, no one has been able to find a link between cosmic ray activity and lightning frequency. Nor is it clear how the presence of grasses, even C4 grasses, can aid the complex changes that could evolve a man from an ape.

Evidence of an explosion in space is provided by **“deep-sea sediments of that age”** that contain a lot of iron-60, which is made, they say, in massive stars. The age of sediments depends upon how rapidly they were laid down. Laboratory and field observations, as well as buried-alive fossils, indicate that layers were laid down quickly. History only goes back some 6 millennia.

“It’s one of those nice stories that all fits together, with the caveat that there’s uncertainty.”

14 October p.18 – Albatross teaches drones new tricks

“Many large soaring birds like the albatross have wings that are white underneath and black on top. Previous explanations focussed on camouflage.

“Abdelkefi’s team [in New Mexico] discovered that a wing’s black upper surface absorbs sunlight very efficiently, causing it to be around 10°C warmer than the lower surface. That effectively lowers air pressure on the upper surface, lowering drag and generating extra lift”



An albatross, showing the dark upperside and predominantly white underside of the wings. Image courtesy of A. Olson, Pixabay.

The Just So story here is that the birds make costly melanin pigment to darken feathers. In the next sentence they say that these findings will help them design more efficient drones.

Here we have evidence for design by an intelligent Creator.

21 October p.14 – Blind cavefish’s strange evolution

“Over the past few million years, blind forms of *Astyanax mexicanus* have evolved in caves. Maintaining the ability to see uses lots of energy, so the loss of eyes is a big advantage for animals living in the dark.”

Of course, this loss of sight is degeneration rather than improvement. The genes for eye development in the cavefish show no signs of disabling changes.

“Instead, the genes have been switched off by the addition of methyl groups onto the DNA – an epigenetic change.” The eye genes are still there in this reversible process. Calling this epigenetic switch

evolution gives the impression that Darwin was right.

28 October p.5 – Tooth controversy

Two 9.7-million-year old teeth from Germany were claimed to be from hominins – human ancestors.

“But anthropologists say one tooth came from a ‘pliopithecoid’ early primate, and the other from a hoofed, cud-chewing mammal.

“Sadly, this discovery isn’t at all what it claims to be. It has nothing whatsoever to do with human evolution.”

The tooth will out.

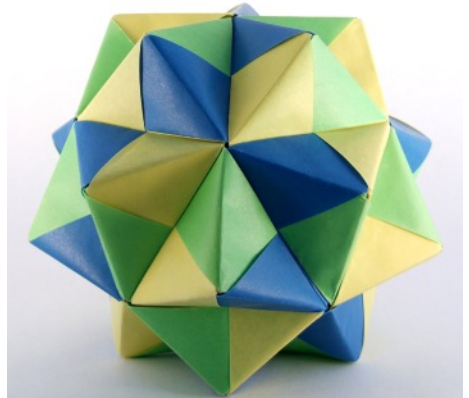
4 November p.28 – Before the beginning

“Some 4 billion years ago, somewhere in the mass of inert minerals and molecules that made up our wet, rocky planet, dead became alive. This was the most important chemical transformation ever to happen on Earth.”

We ‘know’ it happened because we ‘know’ that the early Earth started as a cloud of hot, inert gas, and today we have living things.

“Buried within every cell of every organism on the planet... is a living, working version of the earliest life on Earth – a time machine that allows us to peel away those 4 billion years of history and work out how it all began.

“The new approach starts with modern life and works backwards. Formed of a tangle of proteins and a relative of DNA called RNA,



In origami, precise folding is required to obtain the desired final shape: the input of intelligent design is essential. Protein shapes are far more complex than a flat sheet of paper. To suppose their precise folding could have arisen by blind chance is nonsensical. Image courtesy of M. Silva, RGB Stock.

ribosomes are molecular machines found inside every living cell. They do just one thing and do it well: they read the genetic code contained in DNA and use it to construct proteins.”

The fact that all living cells have ribosomes suggests they date back to when life began. Fine so far.

But a team of biochemists have compared the ribosomes of a number of life forms and, by assuming an evolutionary sequence, come up with what they claim is the first, simplest ribosome. It wasn’t living, but apparently it could join up molecules and add them to its own structure to form **“a mess of co-evolving RNA and protein fragments”**. Then **“chemical evolution winnowed through the randomness and selected the components that clung most to one another”**. The proteins thus made then had to learn how to fold

into a usable shape with the help of other proteins that had already learnt how to fold. **“As these molecules co-evolved, they would have selected protein fragments that were predisposed to fold well.”**

One has to wonder where the proteins to make this early ribosome came from, and how it reproduced itself without the genetic code. Complex molecules, far from self-assembling, naturally break down. Ribosomes are an integral part of many other components that make up a cell, each part being dependent on the whole. They needed to be created together.

11 November p.16 Dino extinction let us come out in the day

A widely held belief is that before the demise of the dinosaurs some 66 my ago, only small mammals existed. They skulked about at night, fearful of being trodden on by huge plant-eating dinos or becoming a snack for carnivorous ones. Once the large reptiles became extinct, big beasts evolved, including man.

In order to confirm this Just So story, scientists here make some assumptions; Firstly, some mammals today have large eye sockets and a reflective layer behind the retina that makes them able to hunt at night. Their ancestors on Darwin’s imaginary tree of life would therefore probably be nocturnal, though eyes don’t usually survive fossilisation.

Secondly, it is assumed that the position of the fossil mammals in the



This fish was evidently midway through eating a smaller fish when it was suddenly buried and fossilised entire. This indicates that sedimentary layers may be laid down rapidly and hence the many millions of years required by Evolution simply do not exist. Image courtesy of J. Cooper, Pixabay.

Earth’s sedimentary layers is a measure of how long ago they evolved.

The conclusion was drawn that diurnal mammals - those who hunt by day like our alleged simian ancestors – evolved 65.8 my ago, 200,000 years after the death of the dinosaurs.

This unscientific confirmation follows inevitably from the starting assumptions.

The biblical history, on the other hand, says that all creatures great and small were created by Elohim in the space of one week only thousands of years ago. Genesis also tells us that God judged the Earth with a worldwide flood. Creatures were buried alive in wet sediment during the year of the flood. Those whose habitat was the sea floor would finish up in the lowest levels, followed by other sea creatures, then land dwellers, then birds with their hollow bones. The only assumption with this scenario is that God’s Word is true. Bill Cooper’s *Authenticity* series of books published by CSM is very persuasive.

18 November p.10 – Porpoise aims its sonar by twisting physics laws

Like dolphins and bats, porpoises produce clicks and receive back reflected echoes from their surroundings to hunt their prey.

The porpoise can focus the emitted beam of clicks to follow the fish without moving its head, by using its facial muscles to contort the melon, a large fatty organ in the front of the head.

“Porpoises have the combination of acoustic controls built into their heads to thank for their ability to focus a directed beam of sonar on prey. The bone, air and tissues of their skulls behave like a metamaterial, a material designed to defy the normal laws of physics. These sea mammals can convert non-directional sound waves into a narrow laser of sound.”

They can also at will broaden the sound beam to keep a fleeing fish in view.

“How they focus the beam is something of a mystery, particularly as the structures that produce the sound – called phonic lips – are smaller than the wavelength of the clicks they produce. This should result in the wavelength being spread out instead of targeted...Each of these parts of a porpoise’s head reflects, refracts and scatters sound in different ways, and sound travels through each of them at different speeds.”

All this found using CT scans.

This research may find application in the design of transducers.

Sonar was invented during WWI to locate submarines. One of the founders of EPM (now CSM) Captain Bernard

Acworth DSO was a leading scientist in this work. The system didn’t invent itself. Neither did the porpoise evolve it using its facial muscles! Clearly this mammal was designed with a purpose.

**18 November p.40 – Delusional you
“We live in an age of mass delusion and very few of us are immune.**

“First we need to be clear about what a delusion is. ‘There’s a loose way of talking about delusions – like when we talk about the ‘God delusion’ – which simply means any belief that’s likely to be false and is held despite lack of evidence, or even in spite of the evidence,’ says Lisa Bortolotti of the University of Birmingham, UK.”

Generally delusional beliefs are irrational but not widely shared. (This rules out most religious beliefs, conspiracy theory and climate change denial.) People can have an unwarranted sense that they are being persecuted. The antidote is to gather evidence and consider different explanations of data.

Surely the most outlandish delusion is that there is no Creator; that everything arrived by chance over billions of years. II Thess. 2 speaks of those whom Satan has deceived, who do not love the truth that leads to salvation. *And for this cause God shall send them a strong delusion, that they should believe a lie.* The lie, I believe, is Evolution Theory. CSM has been exposing the lie since 1932 - 86 years- and our Genesis Expo is reaching tens of thousands of tourists each year. Thank you, our supporters, for helping us and other creationist

organisations to reach these deluded souls.

2 December p.7 – Big-beaked birds

The journal *Nature Ecology & Evolution* reports that though evolution usually moves at a snail's pace, North American birds called snail kites have evolved larger beaks in less than a decade. They managed this in order to eat invasive island apple snails that are much larger than the snails they used to eat.

Darwin used a similar argument for evolution with his Galapagos finches. Much like humans, some kites have small beaks and some have big ones. This is because some express genes for small and others for large beaks. With the invasion of large snails, the birds with beaks capable of coping with them survived and passed on their genes for large beaks to their fledglings.



A female snail kite, *Rostrhamus sociabilis*. Image: D. Sanchez, Wikipedia, via Flickr, goo.gl/JjW3jn, under [CCSA 2.0 Generic licence](https://creativecommons.org/licenses/by/4.0/).

If the food supply reverted to small snails, the remnant with little beaks would multiply. It doesn't take eons of time. The gene pool remains the same. Variation within a kind is not evolution.

2 December p.35 – Modern families, A family affair

The article argues that monogamy is a relatively modern development and hardly a sure path to happiness. **“Is it time to explore the alternatives? Throughout our early history, polygyny, or one male with several females, was routine”**

The Lord Jesus pointed out that at the beginning He had made them male and female and told them to cleave to one another as one flesh.

Abram's problems began when Sarai persuaded him to mate with Hagar, her maid. Isaac loved Rebecca only, but their son Jacob had children by his 2 wives as well as their maids, which led to discord.

In our own country we now have alternatives to marriage, and the government is thinking of introducing heterosexual civil partnerships without the commitment to lifelong devotion that provides stability for the children – marriage-lite.

9 December p.28 – The elephant in the gloom

“Dark energy must be weirder than we thought, with dramatic consequences for the universe.”

“We have long since abandoned Einstein's idea of a static, unchanging cosmos in favour of a

universe that is not only constantly expanding, but whose expansion is continually accelerating, at the mercies of the mysterious agent called dark energy. No one knows what this dark energy might be, beyond the fact that it must make up two thirds of everything there is.”

But this ‘fact’ is the outcome of a theory (the big bang) that cannot be verified and that has to incorporate fudge factors like dark energy and dark matter in order to agree with observed data. Einstein’s cosmological constant is anything but constant.

“The consequences for the ultimate fate of the universe are dramatic. Go forward in time far enough and the accelerating acceleration overtakes the forces holding matter together at every scale. Ultimately, each of the universe’s constituent particles will be torn apart in a scenario known as the big rip.”

Scripture tells us in several passages that at Creation, God stretched out the heavens. One can compare this to stretching out a rubber band and then letting it go free. It returns to its original state, very rapidly at first but slowing down as equilibrium is approached. This could be the explanation for the data that shows a decreasing speed of light whose rate of decrease is slowing down as it approaches a constant speed (see pamphlets 256 and 262).

Far from a big rip, God’s Word promises that this old world will be folded up like a garment, to be replaced with new heavens and a new Earth.

‘We have a more sure word of prophecy.’

23/30 December p.41 – Review 2017: Humans are how old?

“For decades anthropologists have believed that *Homo sapiens* evolved 200,000 years ago. But *H. sapiens*-like skulls from Jebel Irhoud in Morocco have now been dated to between 250,000 and 350,000 years ago. The find rewrites our history.”

The fact that there is a 40% error bar in this result should alert us to its lack of accuracy. In fact, all such dates are based on assumptions, whatever the method used. The overriding assumption is that the layers of Earth’s sediments represent the passage of time. History tells us of a worldwide flood some 4,500 years ago. The fossils were all laid down in the year of the flood, apart from some more recent ones formed by local catastrophic events. The evolution of man from an ape-like creature is a genetic impossibility.

23/30 December p.67 – Ear Witness

The ‘winter holiday’ edition always contains a number of interesting and amusing articles. This one concerns earwax in humans, whales and sheep.

“More formally, the glop in your ears is called cerumen, and it is made up of the secretions of the ceruminous glands – specialised sweat glands – and sebaceous glands in the outer ear canal. Most of these are waxy compounds, which clean the ear canal and protect it from drying out, as well as killing bacteria and

trapping foreign bodies like dust and fungal spores. Mixed into that wax are bodily cast-offs like shed skin and hair, alongside potent antimicrobials and other chemicals.”

This wax could have forensic use, since it contains information such as DNA, drug and tobacco use and is diagnostic of both types of diabetes. Earwax types vary with ethnicity. It can also diagnose pregnancy and lactation in ewes.

Clearly, earwax is a designer product.

2017 Genesis Expo Visitors' Book

Here are just a few of the many comments left in the visitors' book. Words like fantastic, extremely interesting, most helpful staff were sprinkled throughout its pages.

The family and I found that this was a great trip from Devon. The girls loved it and we have bought a few bits for their school report. Thank you.



Just a few of the wide variety of displays at the Genesis Expo. Image: CSM.

Haven't been for a while and very impressed at the additions. Love it. [Deal]

We are so happy that this place exists. We rejected evolution long ago and it is fantastic to have somewhere that promotes the truth in Portsmouth. Hopefully more people will wake up. You're doing a good work.

Fascinating place – so much to think about. Food for thought, full of information.

Thank you so much for having such an amazing place, and for your hospitality. I hope to be in contact so you can multiply your ministry in the far west. [Redruth]

I came in with my 14 students and we will come again – thank you.

Me and my brother enjoyed looking at all the dinosaur fossils.

Wonderful! Can spend several hours here easily.

Well done! Praise the Lord! [Belgium]

Wow! What a place. Everybody should visit and open their minds.

Great experience. A real hidden gem.

Great! I should have been here with my kids. [S. Korea]

Second visit of week, to decide on what books & DVDs to buy – too much choice of great quality items.

Lovely and great to be able to buy a real dinosaur tooth.

Well researched, thoroughly scientific and

nicely presented. Would recommend it to anyone who wishes to know the real origin of the human race.

Wonderful displays and a fantastic collection of fossils.

Quotes

“Thankfully most atheists are not monsters like Stalin. Many are well behaved citizens in good standing, some quite charming and even thoughtful. At the same time, in my experience with atheists, I’ve encountered more than once an inexplicable, incongruent and visceral hatred for the very God they imagine does not exist.

“The apostle Paul long ago explained how this could be. Regardless of whatever they may tell themselves and others, the truth of God’s existence ‘is plain to them’ because ‘his invisible

attributes, namely, his eternal power and divine nature, have been clearly perceived, ever since the creation of the world, in the things that have been made. So they are without excuse’ (Romans 1:19-20).”

M. Barber, April 2016, goo.gl/sWJtMx

“Atheism is a religion. It makes claims about origins and the nature of our existence. It also has followers that range from casual to zealots. It’s a worldview that when used as a basis for reasoning affects every other thing in the life of an atheistic believer. It’s another pagan religion in a long line of pagan religions. The difference is that in atheism, the human is the supreme being. Very dangerous.”

Author unknown, 2017

“The riddles of God are more satisfying than the solutions of man.”

G. K. Chesterton

Creation Science Movement

PO Box 888, Portsmouth PO6 2YD, UK

Founded 1932, Registered Charity 801745

<https://www.genesisexpo.org.uk>

csmoffice@tiscali.co.uk; tel. 02392 293988

www.facebook.com/Creation-Science-Movement-160127110749224/